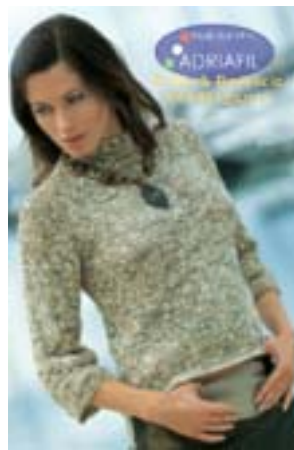


# “MARICA” PULLOVER

## yarn *IBIZA PRINT*



### MATERIALS ADRIAFIL YARNS

### MATERIALS REQUIRED

350 g **Ibiza Print** yarn colour no. 47. Knitting needles no. 51/2. Tapestry needle.

**SIZE:** IT 40 (42-44) - US 6 (8-10) - UK S (M-L)

### PATTERN STITCHES

Knitted stitch

### GAUGE

10 x 10 cm. with knitting needles no. 51/2 in knitted stitch = 11.5 sts. and 15 rows.

### WORKING INSTRUCTIONS

**Back:** with knitting needles no. 51/2 cast on 46 (50-54) sts. and work in knitted stitch. When work measures 31 (32-33) cm. from beg., for the raglan decr. at the ends, inside 1 st., 2 sts. every 4 rows 7 (8-9) times. When work measures 19 (20-21) cm. from beg. of raglans, cont. on the rem. stitches to shape the neck; work for 7 cm. then bind off all the stitches.

**Front:** work like the back.

**Sleeves:** with knitting needles no. 51/2 cast on 38 sts. and work in knitted stitch. When work measures 27 (28-29) cm. from beg., shape the raglans to match back. When work measures 19 cm. from beg. of the raglans, cont. on the rem. stitches to shape the neck; then after 7 cm., bind off all the stitches.

### MAKE UP AND FINISH

Sew up the raglans and the sides of the neck. Sew up the underarms and the sides.

